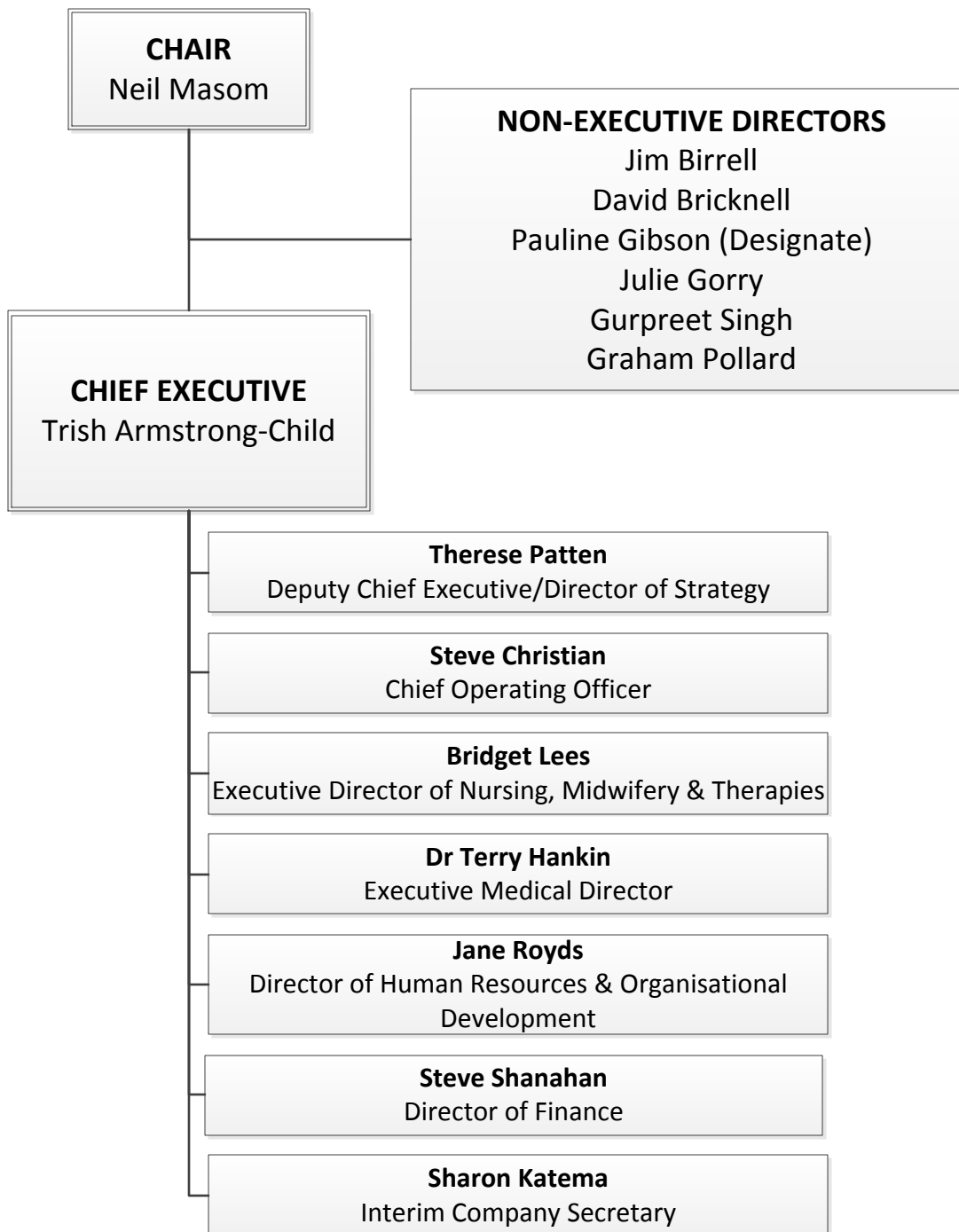




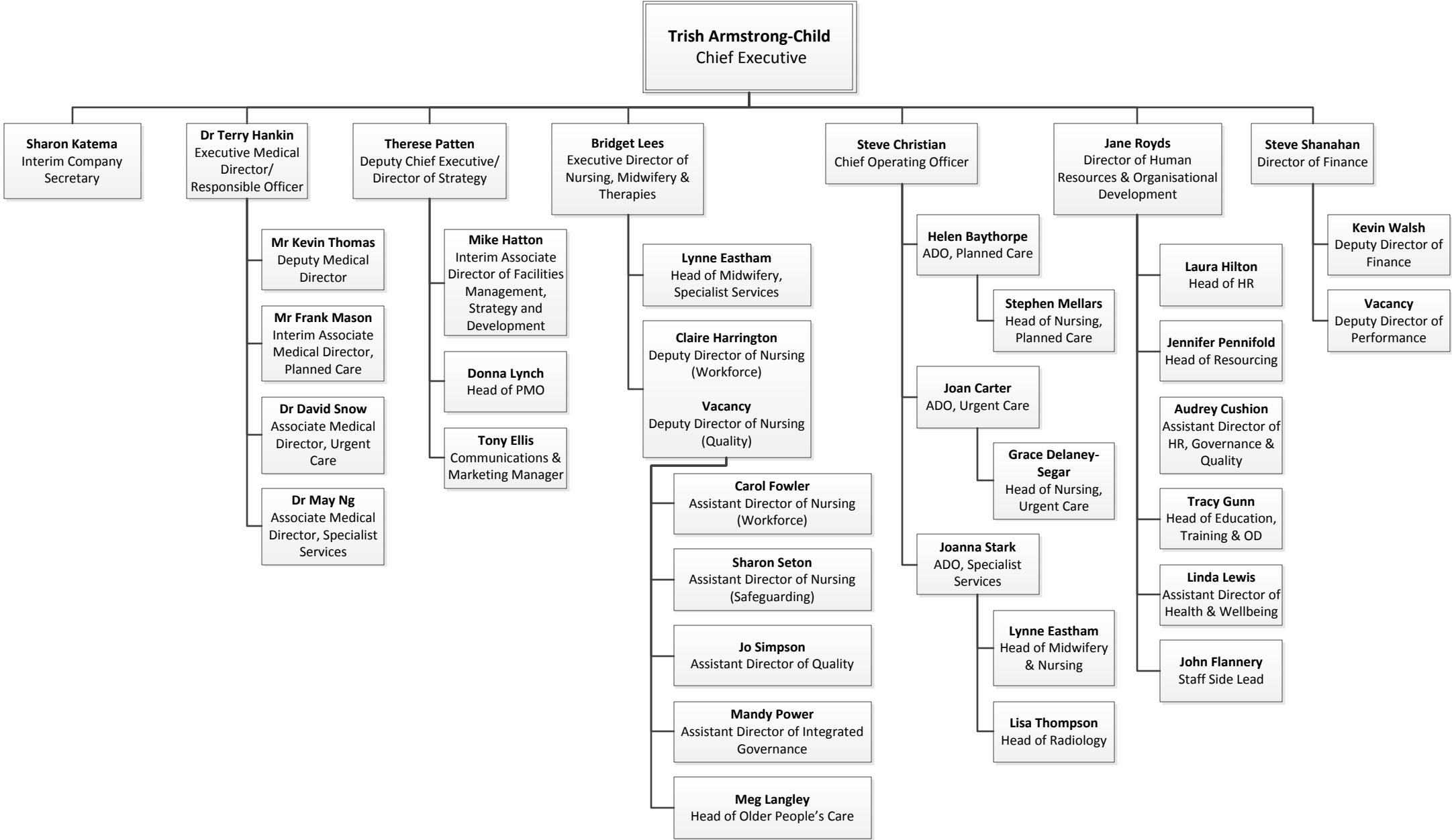
Southport and  
Ormskirk Hospital  
NHS Trust

# WHO'S WHO March 2020

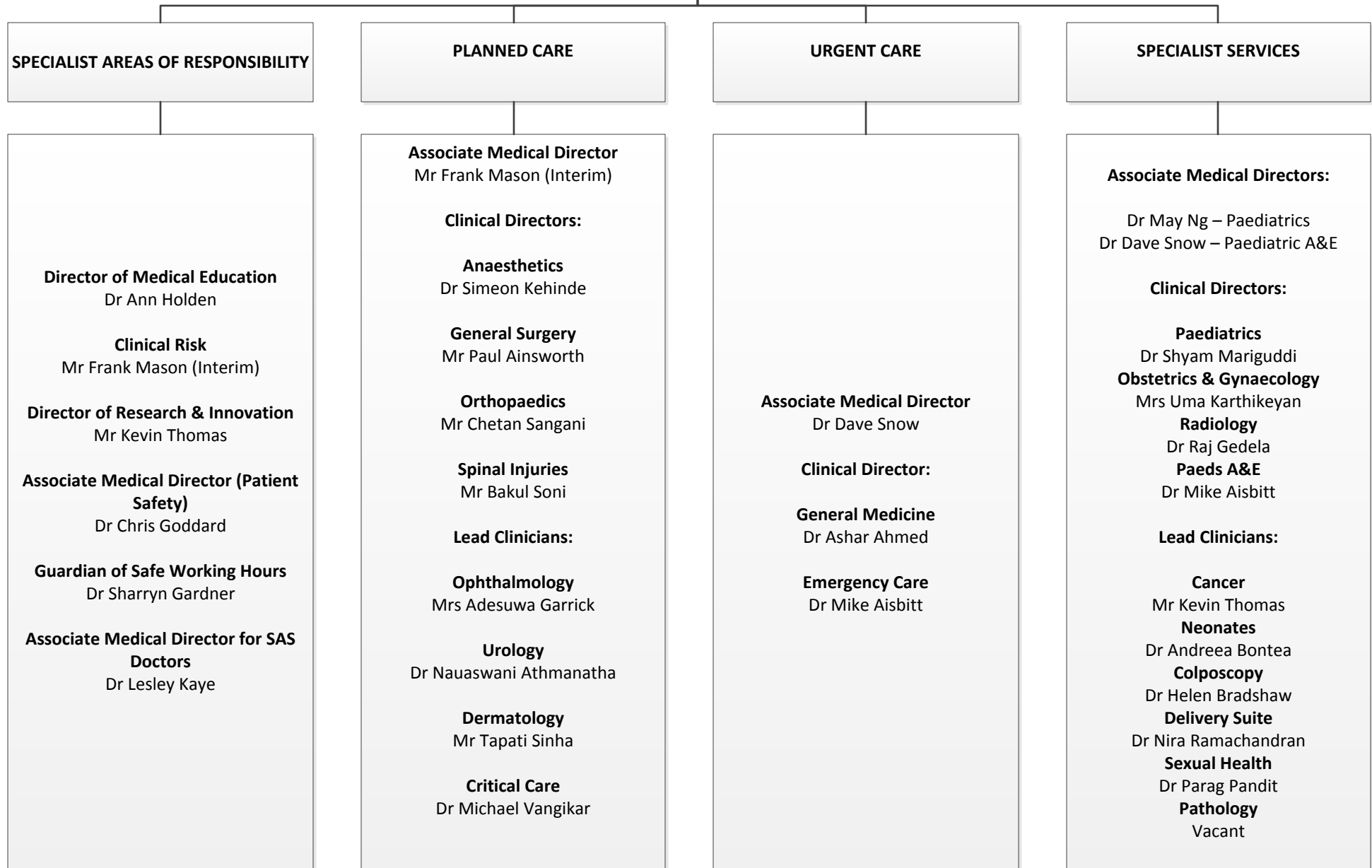
Version 36



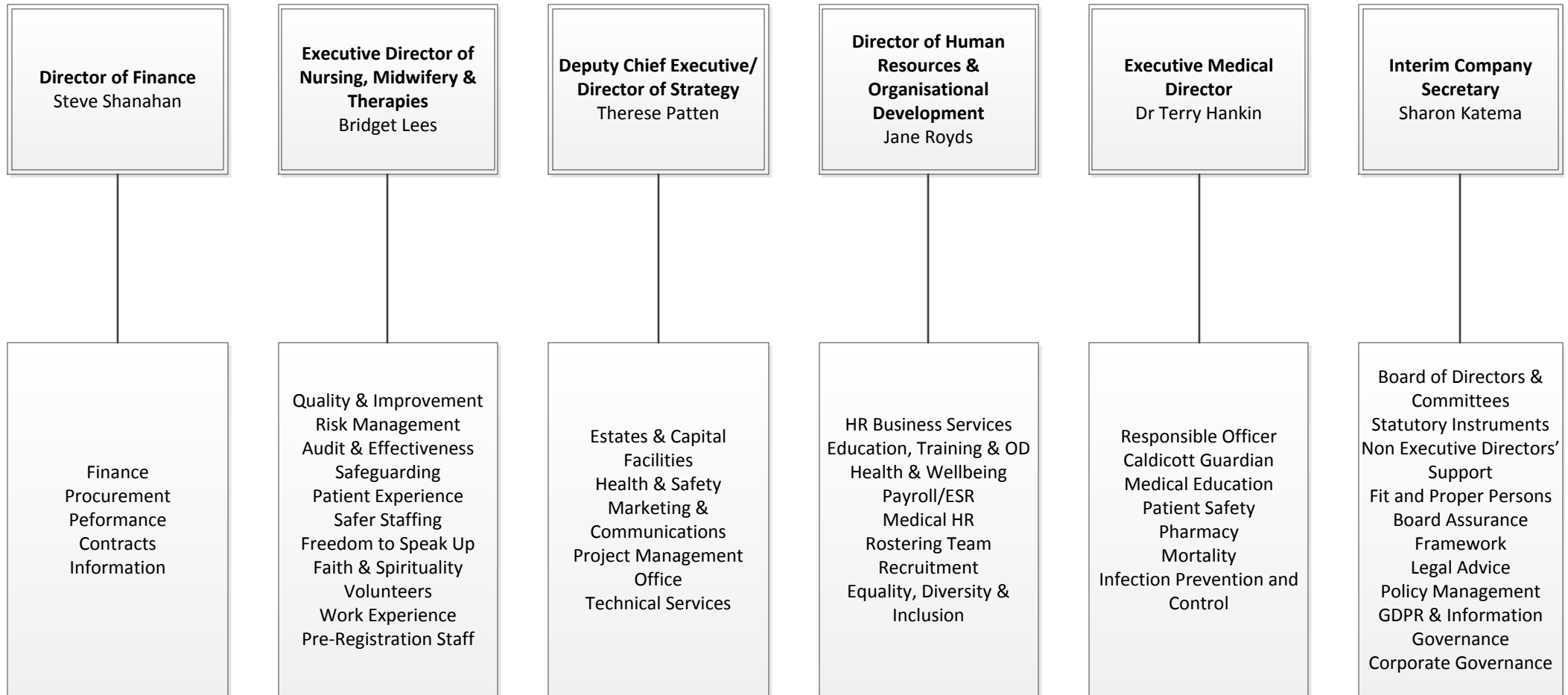
# Senior Management Team



## EXECUTIVE MEDICAL DIRECTOR/ MEDICAL RESPONSIBLE OFFICER

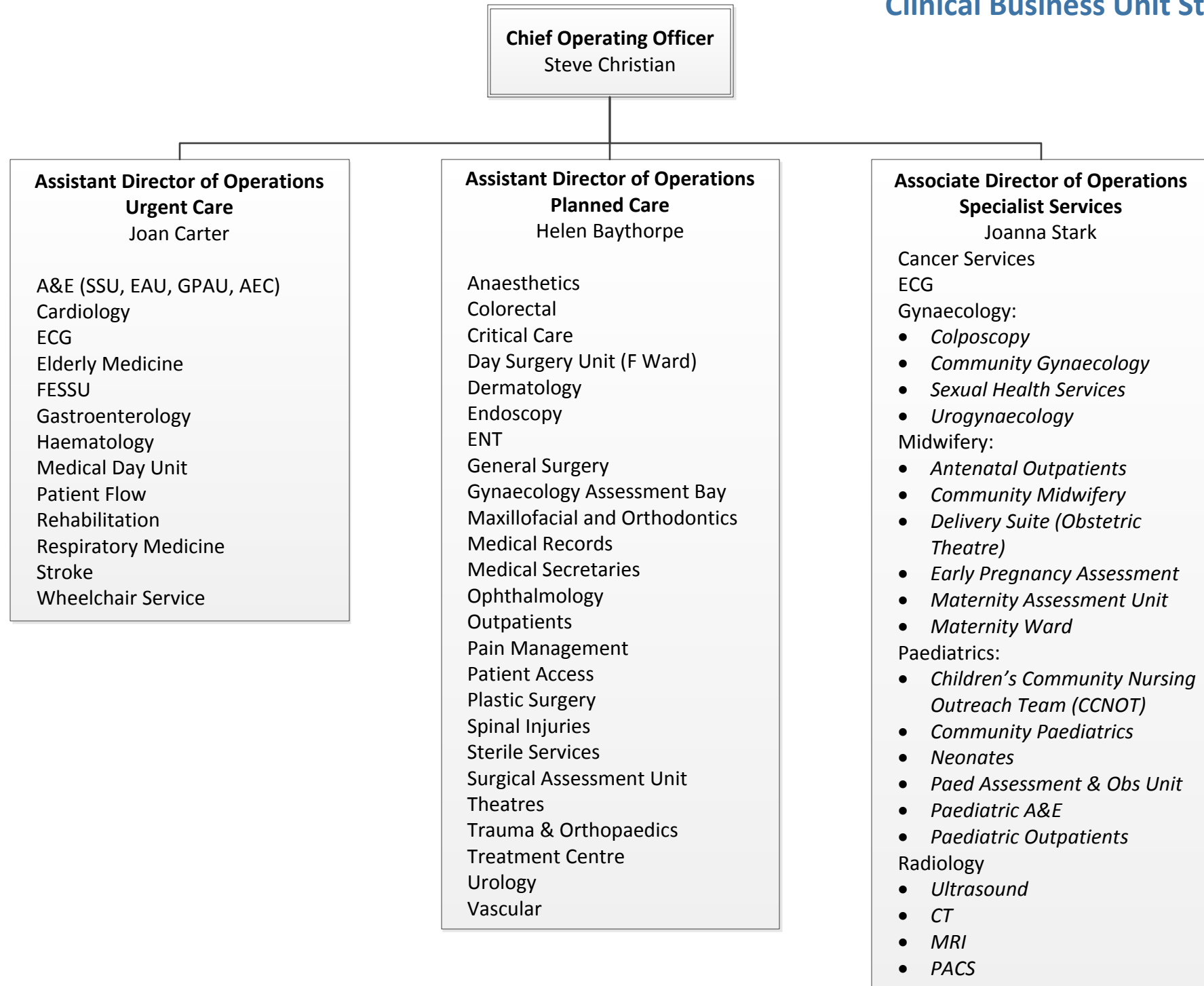


# Corporate Business Unit Structure

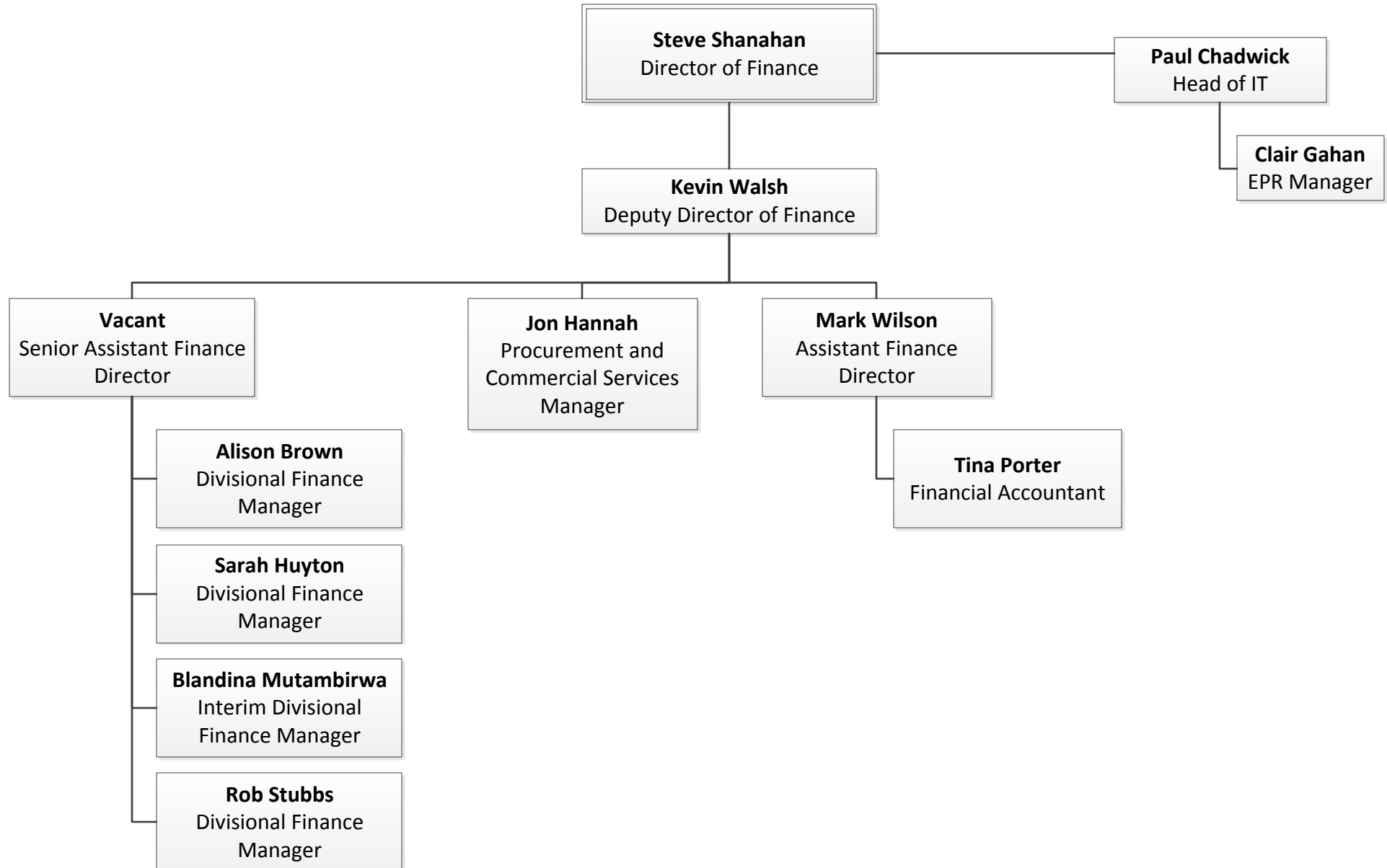


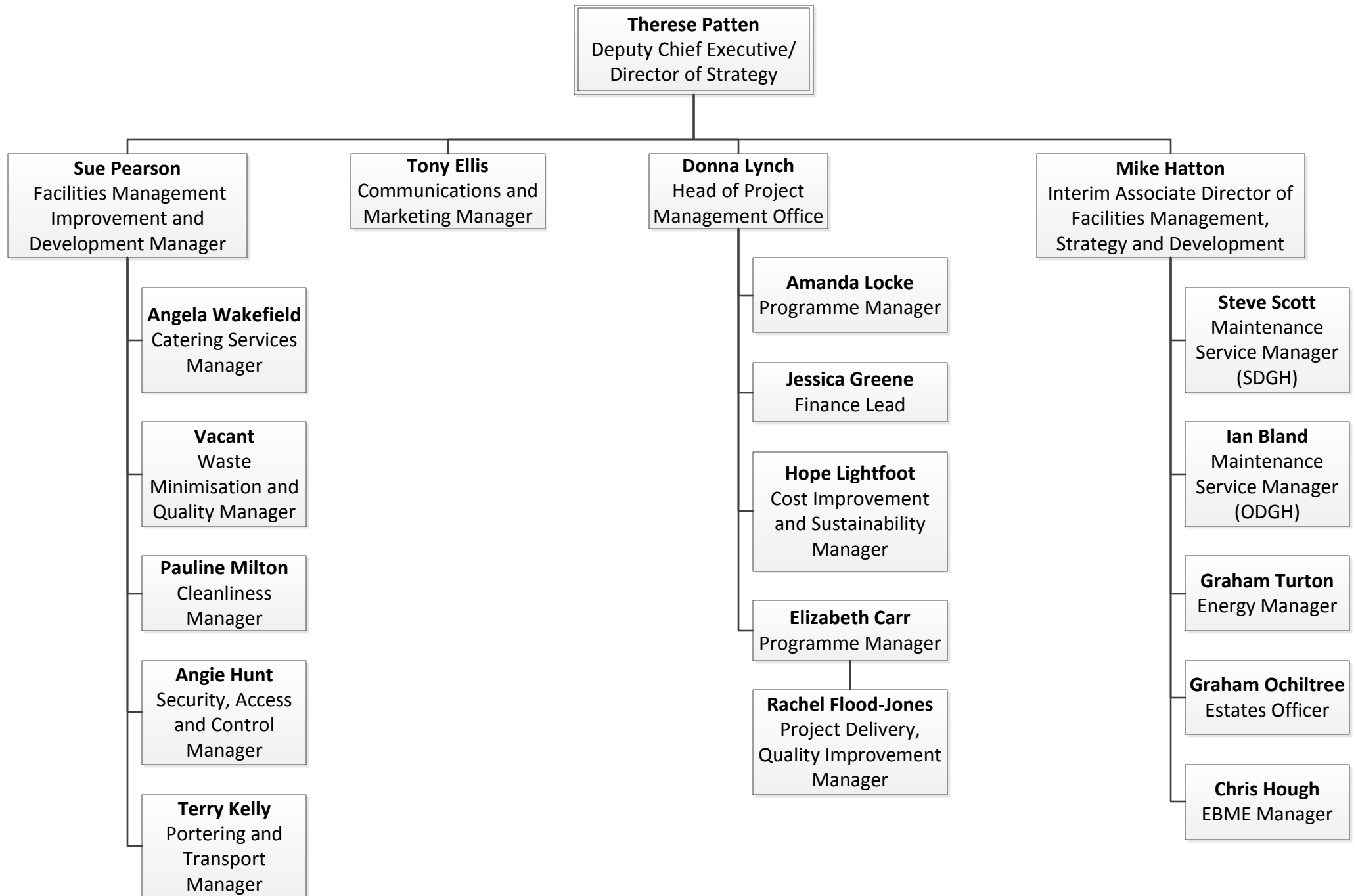
Chief Operating Officer, Steve Christian – See next page

# Clinical Business Unit Structure



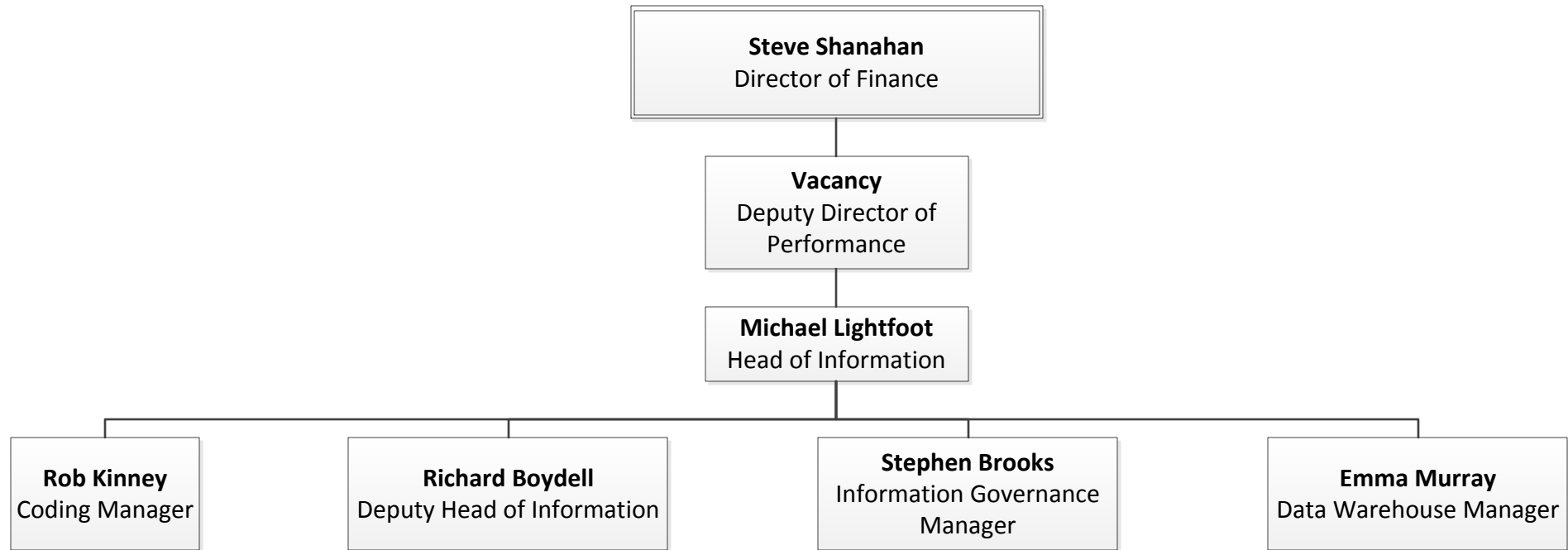
# Director of Finance

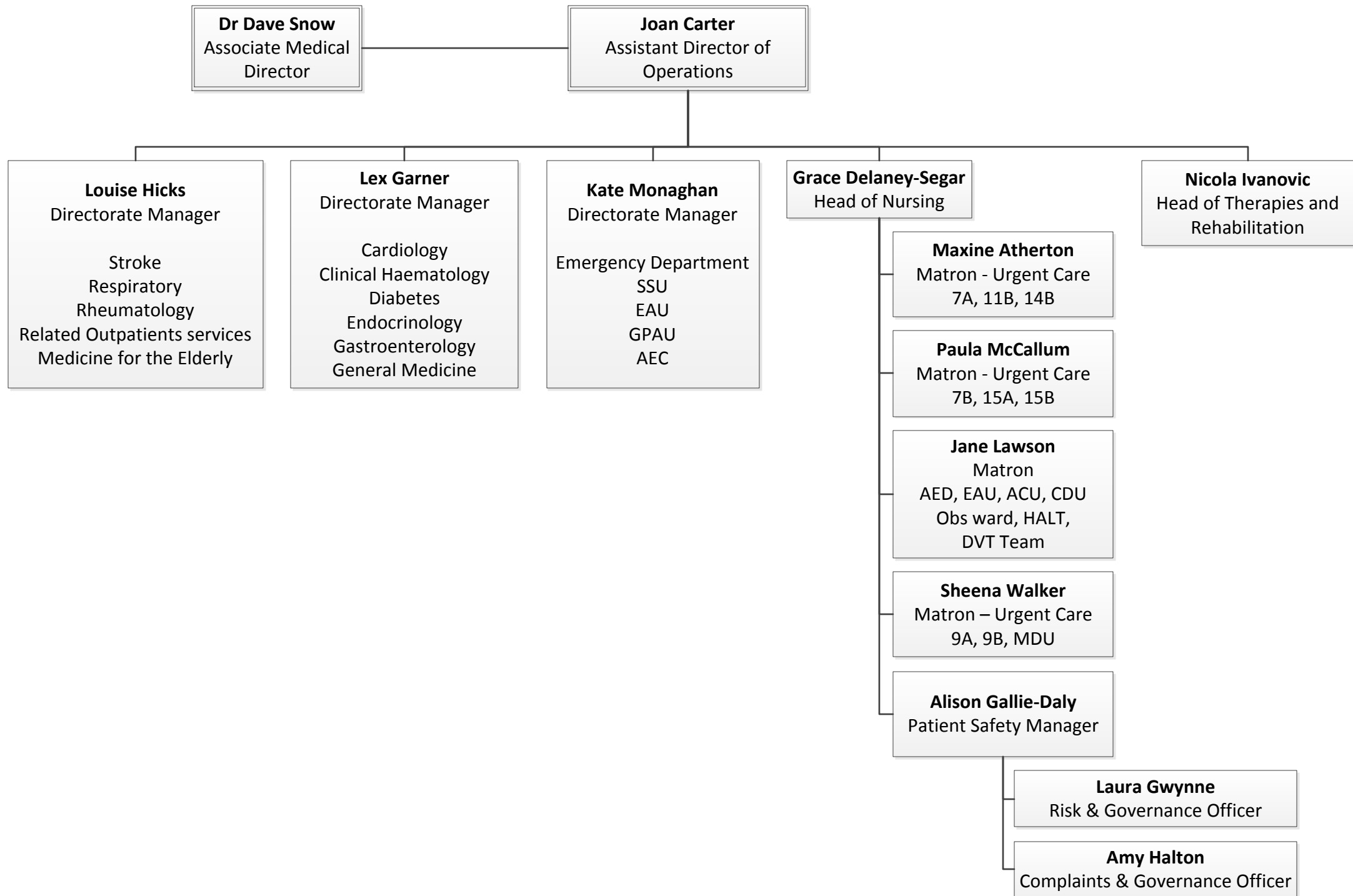






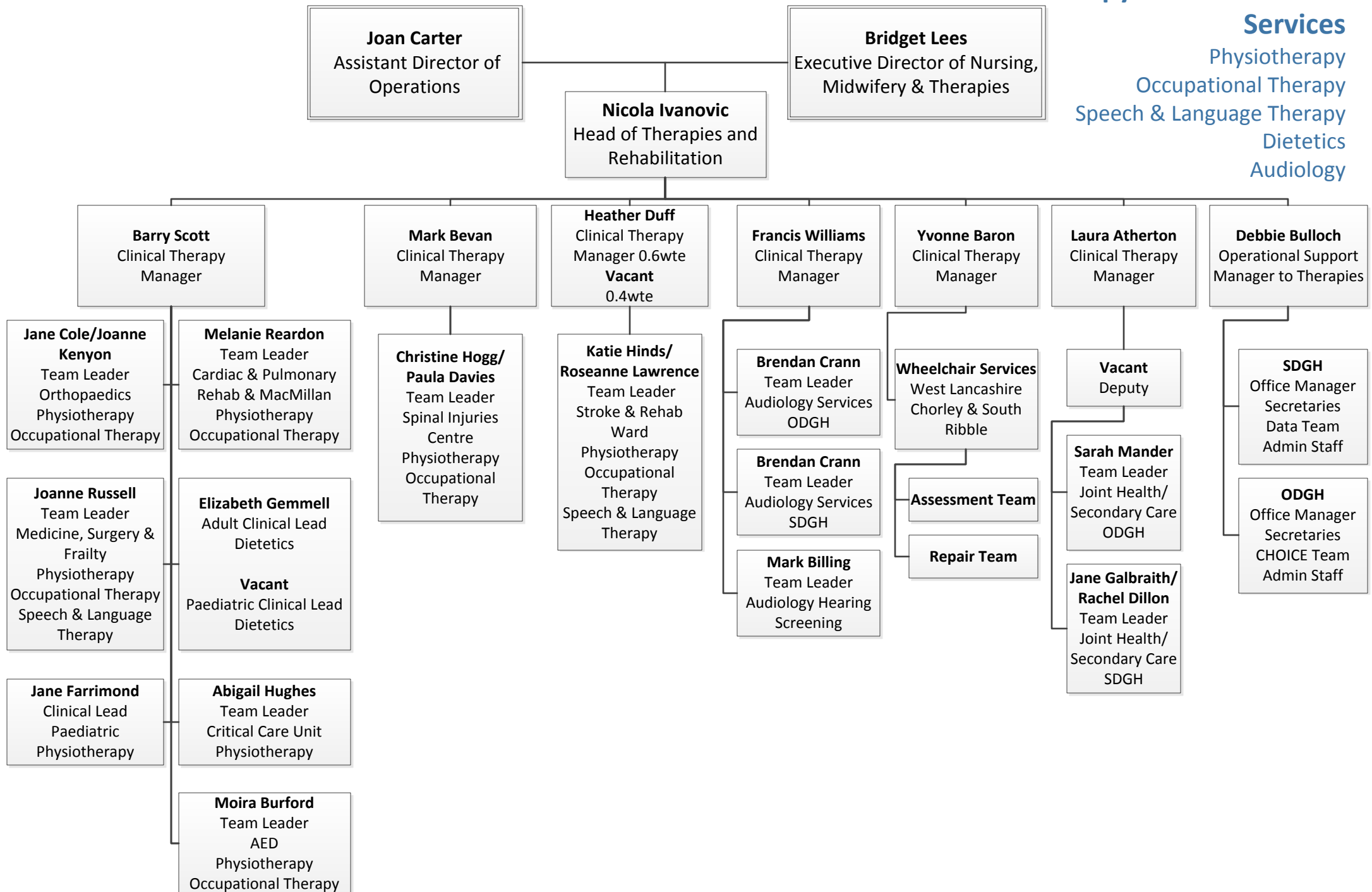
# Information and Performance Management





# Therapy & Rehabilitation Services

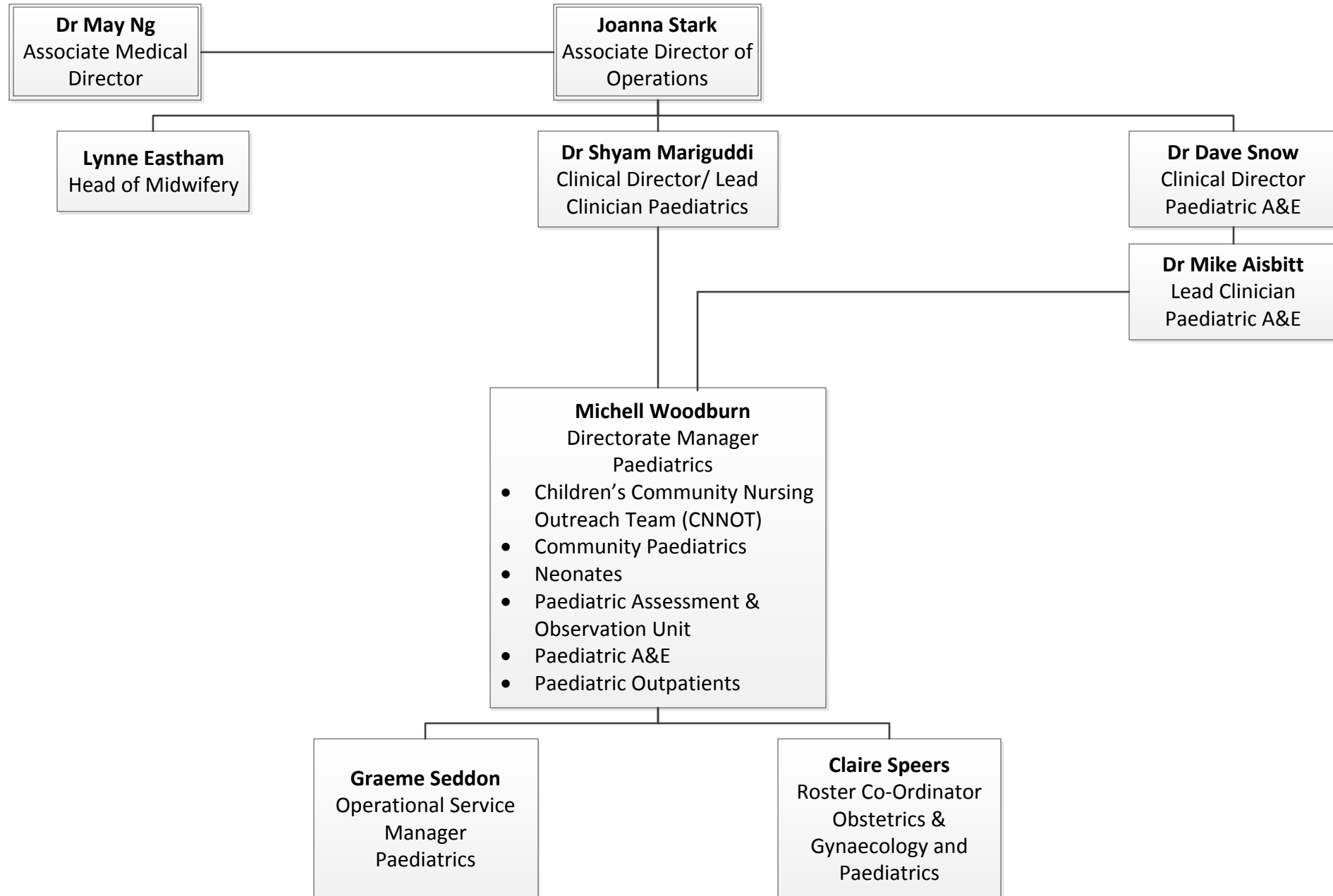
Physiotherapy  
Occupational Therapy  
Speech & Language Therapy  
Dietetics  
Audiology



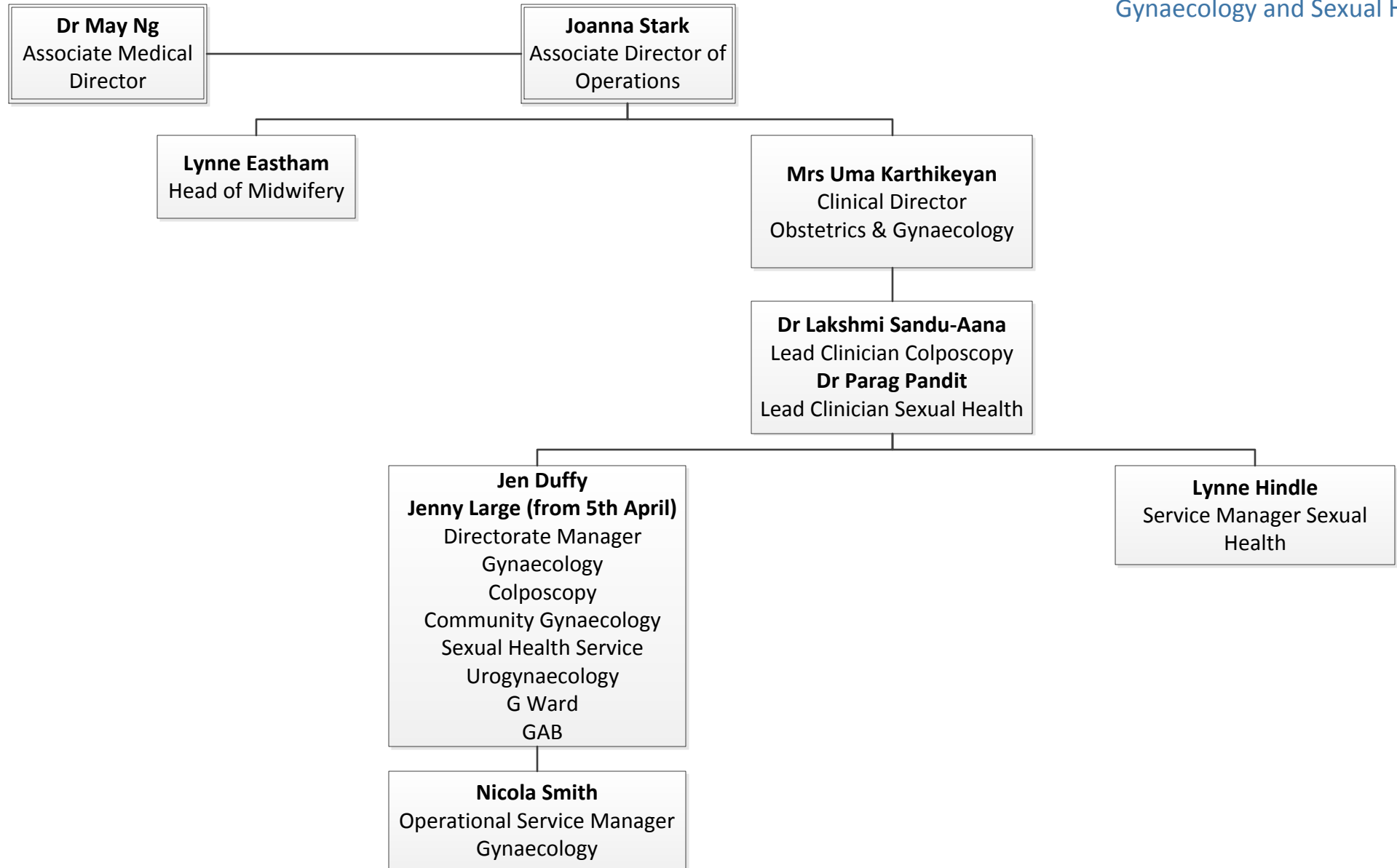
**Specialist Services**  
**Women's & Children's**  
Obstetrics



**Specialist Services  
Women's & Children's**  
Paediatrics

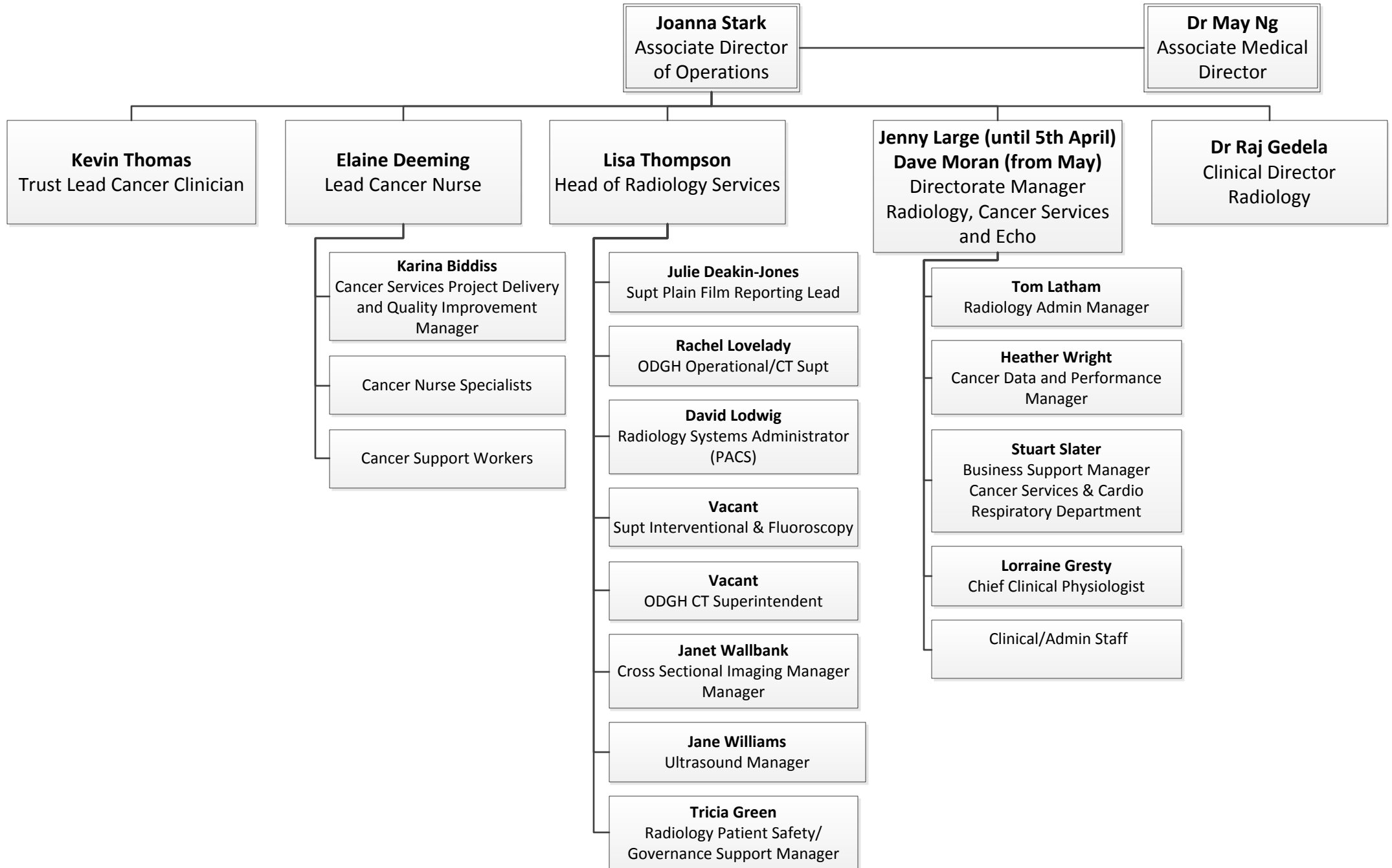


**Specialist Services**  
**Women's & Children's**  
Gynaecology and Sexual Health



# Specialist Services

## Cancer, Radiology and ECG



**Specialist Services**  
**Obstetrics & Gynaecology, Paediatrics and Sexual Health**  
**Midwifery and Nursing Structure**

**Joanna Stark**  
Associate Director  
of Operations

**Dr May Ng**  
Associate Medical Director

**Cathy Knight**  
Risk, Governance and  
Risk Co-ordinator

**Lynne Eastham**  
Head of Midwifery and  
Nursing

**Karen Leyland (from 30<sup>th</sup>  
March)**  
Risk, Governance and  
Complaints Officer

**Wendy Hicks**  
Matron – Gynae and Sexual  
Health

- *Colposcopy*
- *Community Gynaecology*
- *Sexual Health Service*
- *Urogynaecology*
- *G Ward*
- *GAB*

**Shirley Coward**  
Matron – Paediatrics  
**Linda Connolly**  
Deputy Matron

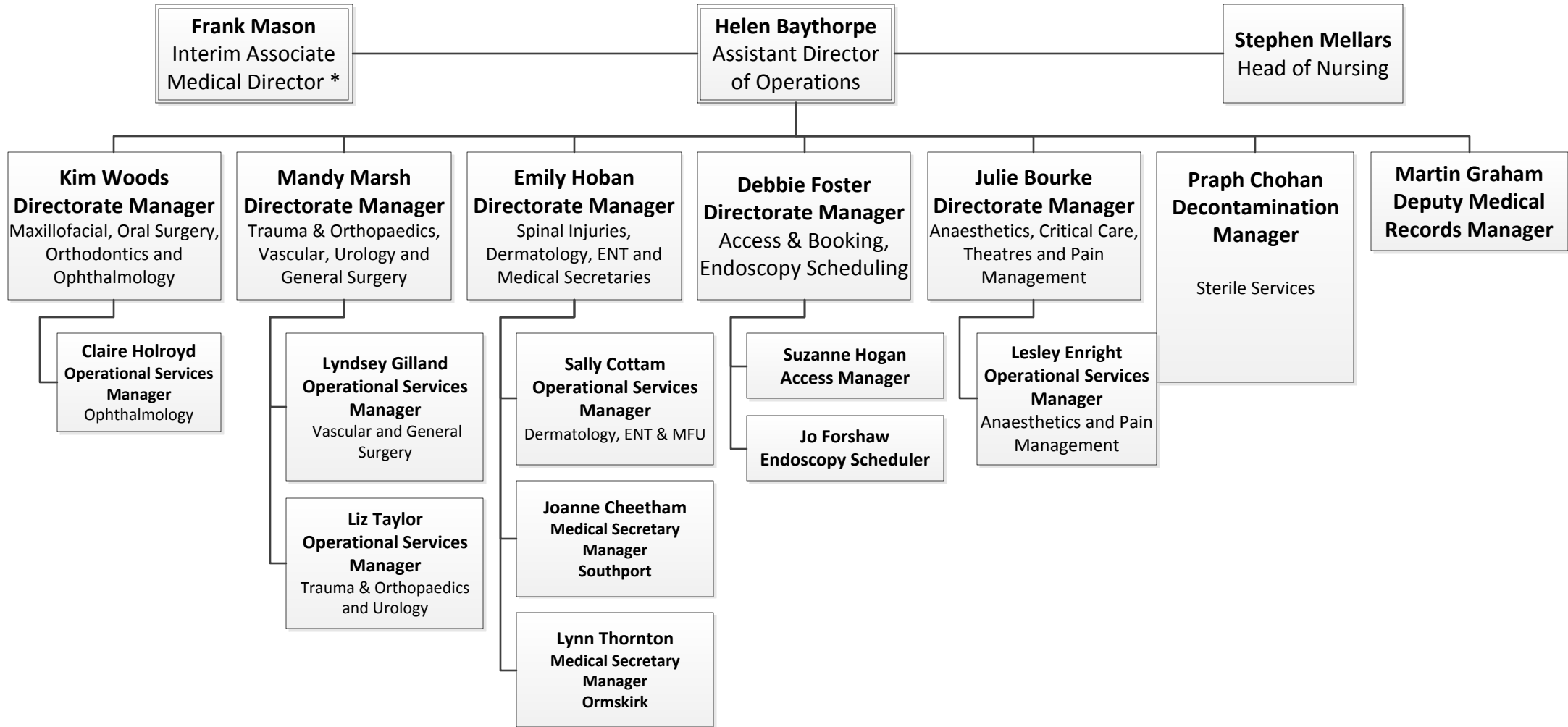
- *Children’s Community Nursing Outreach Team (CCNOT)*
- *Community Paediatrics*
- *Neonates*
- *Paed Assessment & Obs Unit*
- *Paediatric A&E*
- *Paediatric Outpatients*

**Janet Calland**  
Matron – Midwifery/Obstetrics

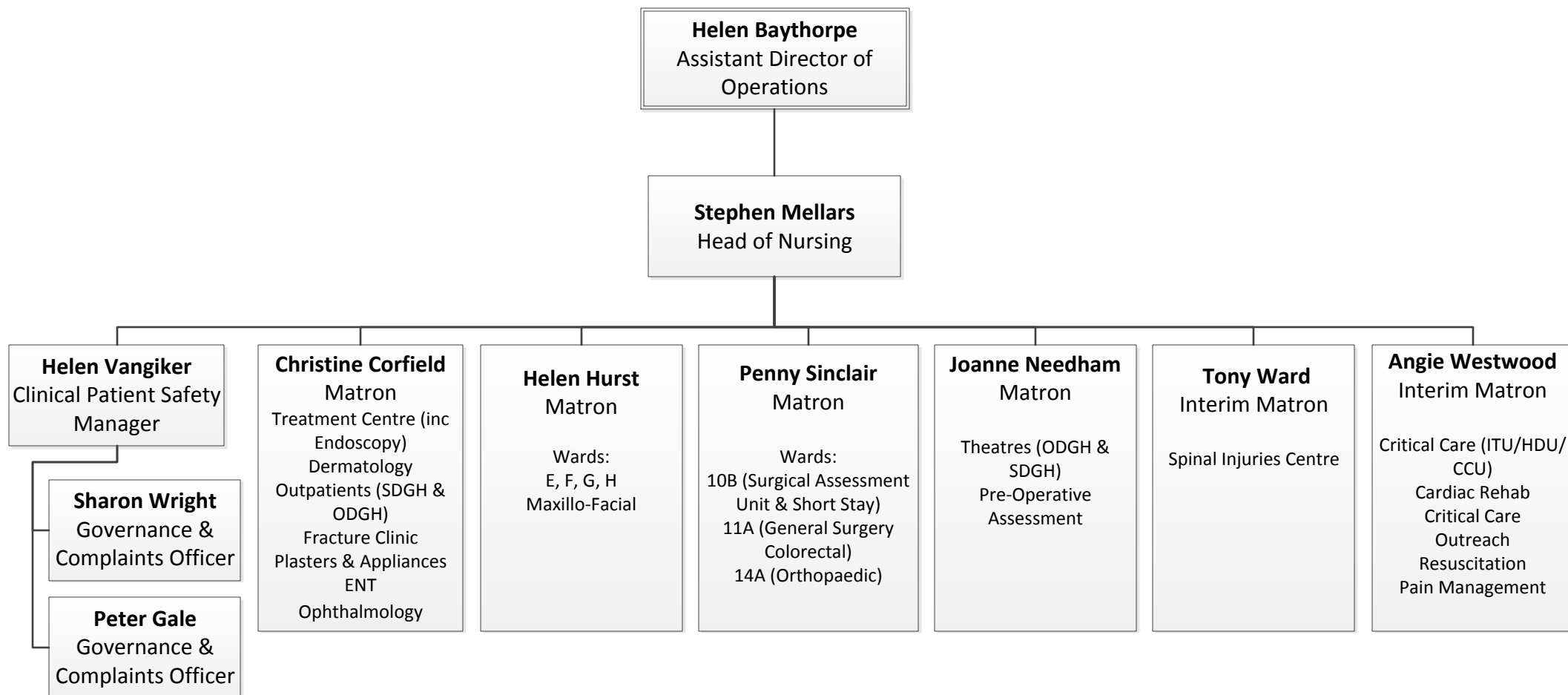
- *Antenatal Outpatients*
- *Community Midwifery*
- *Delivery Suite (Obstetric Theatre)*
- *Early Pregnancy Assessment*
- *Maternity Assessment Unit*
- *Maternity Ward*

**Catherine Boyle**  
Consultant Midwife

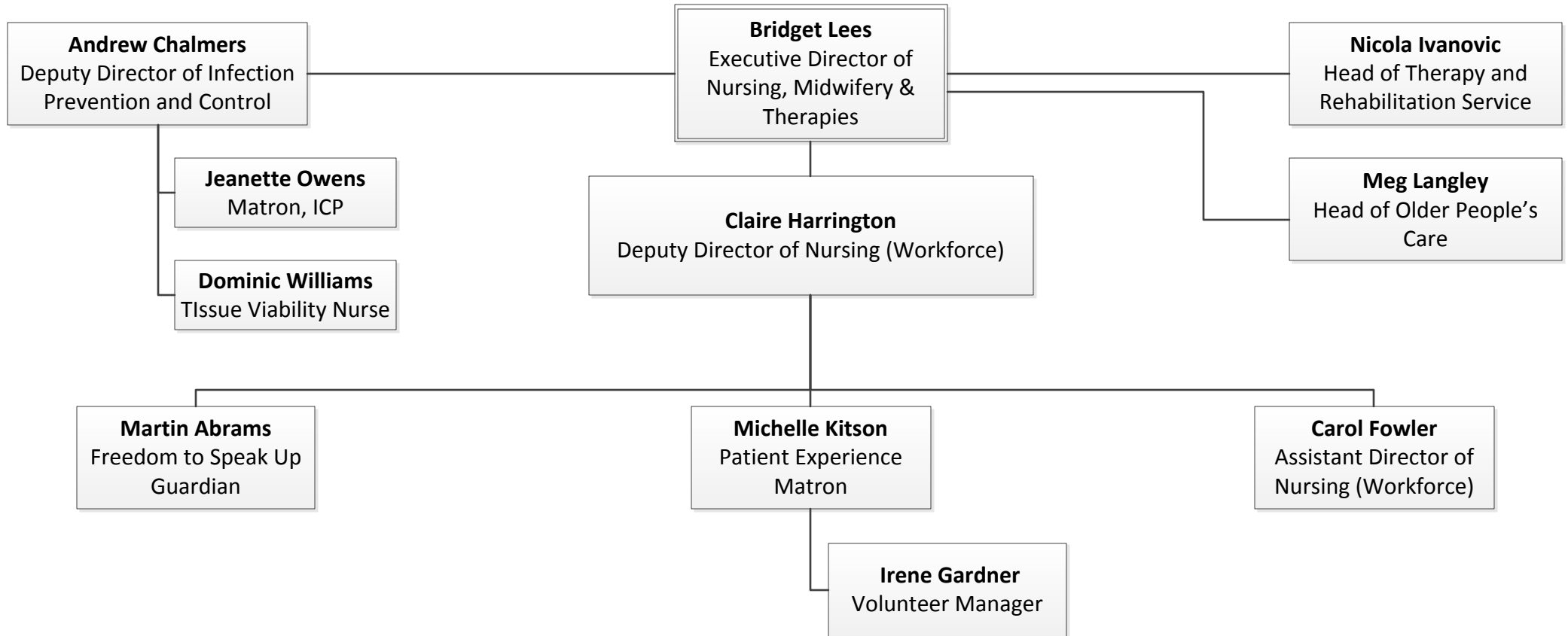


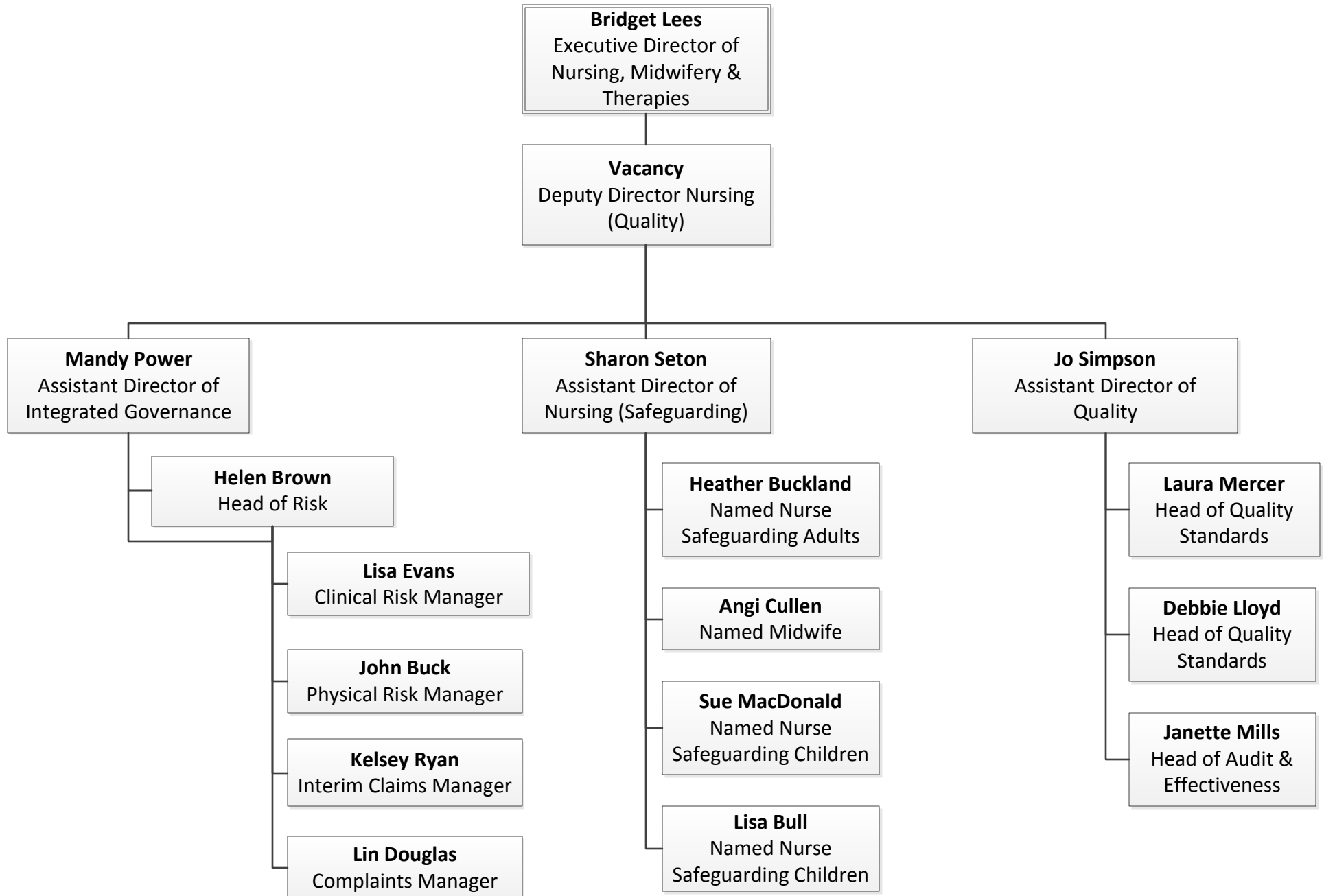


\* For Clinical Directors, see Medical Management Arrangements chart

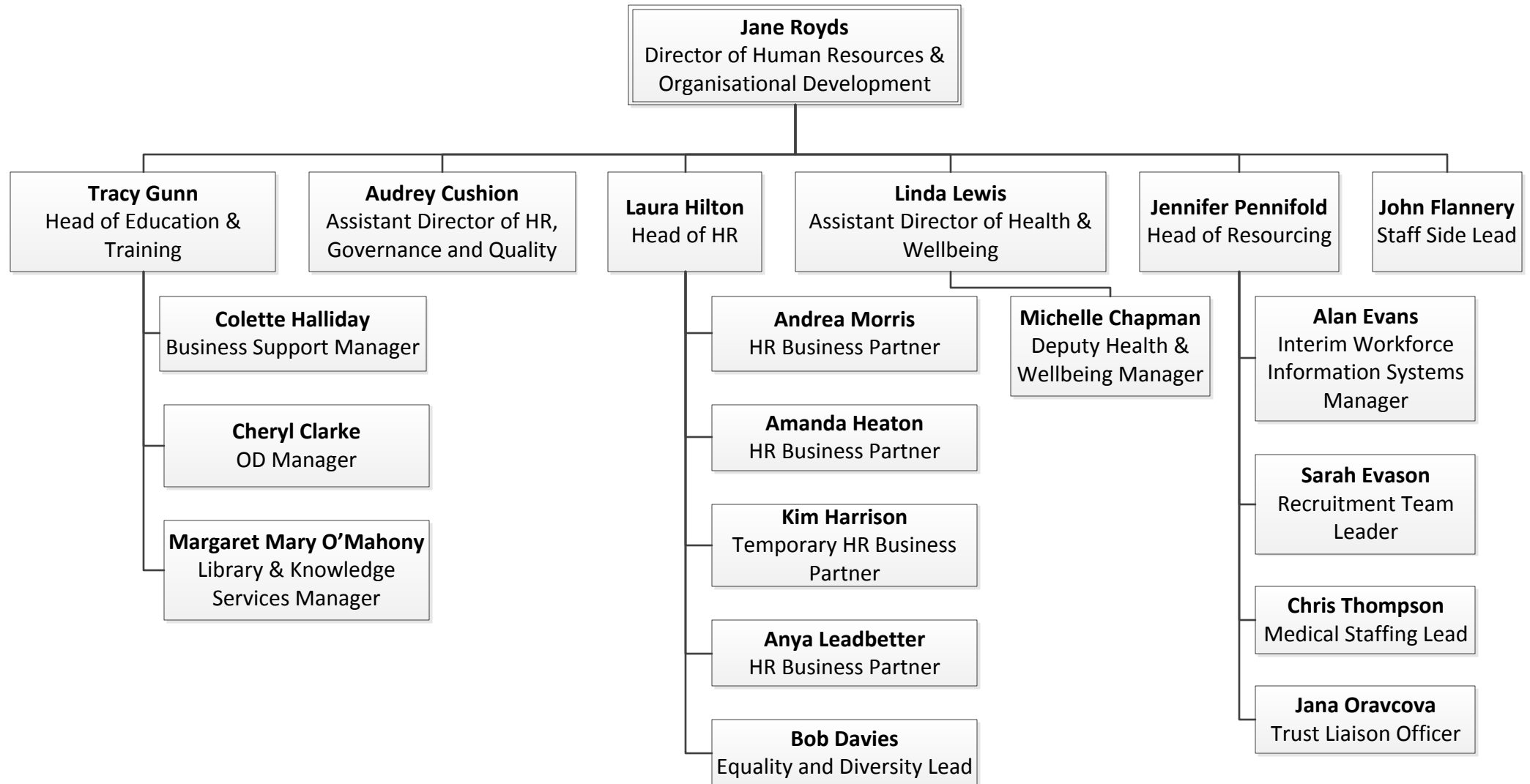


# Nursing, Midwifery, Therapies & Governance

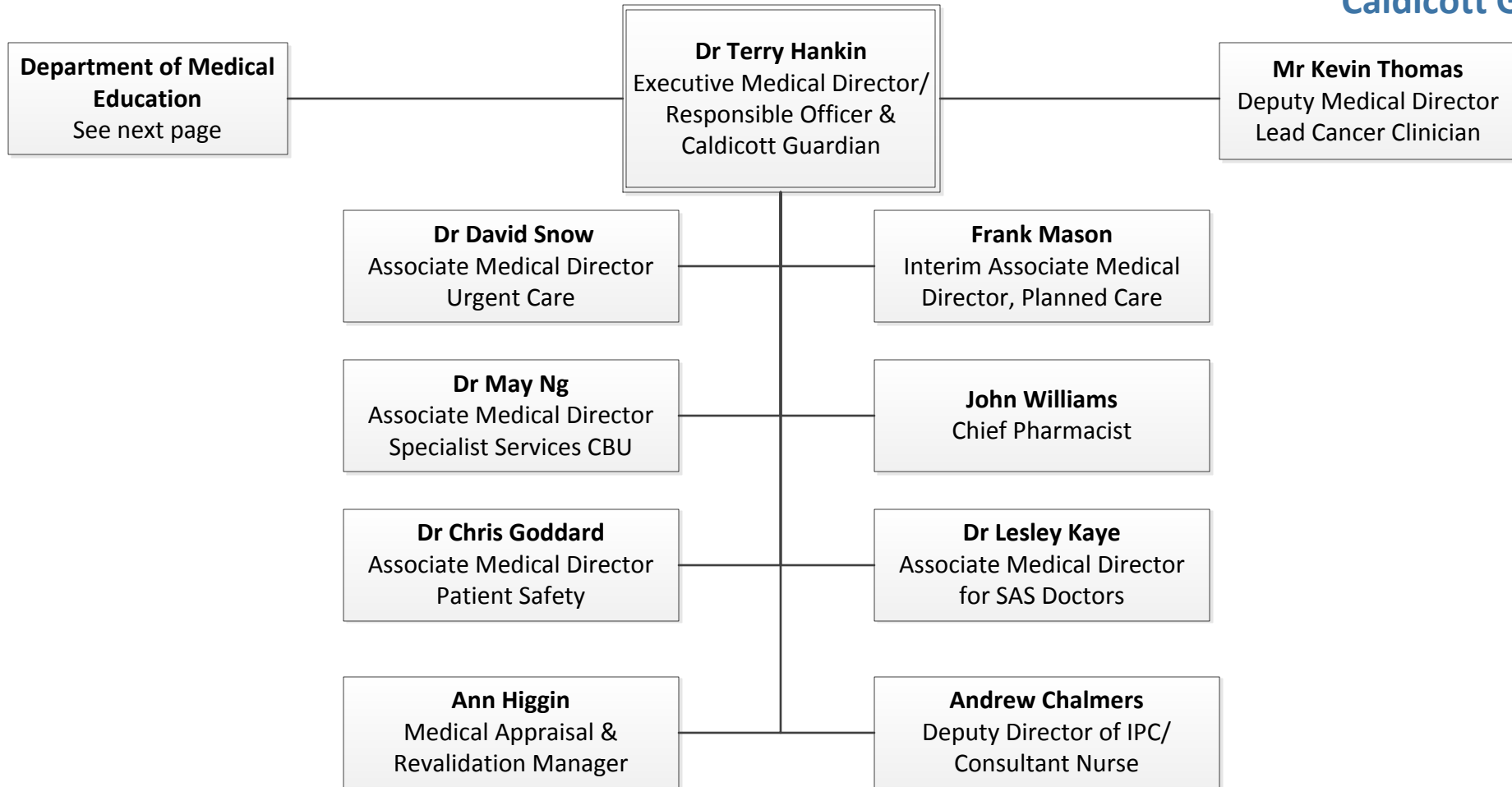




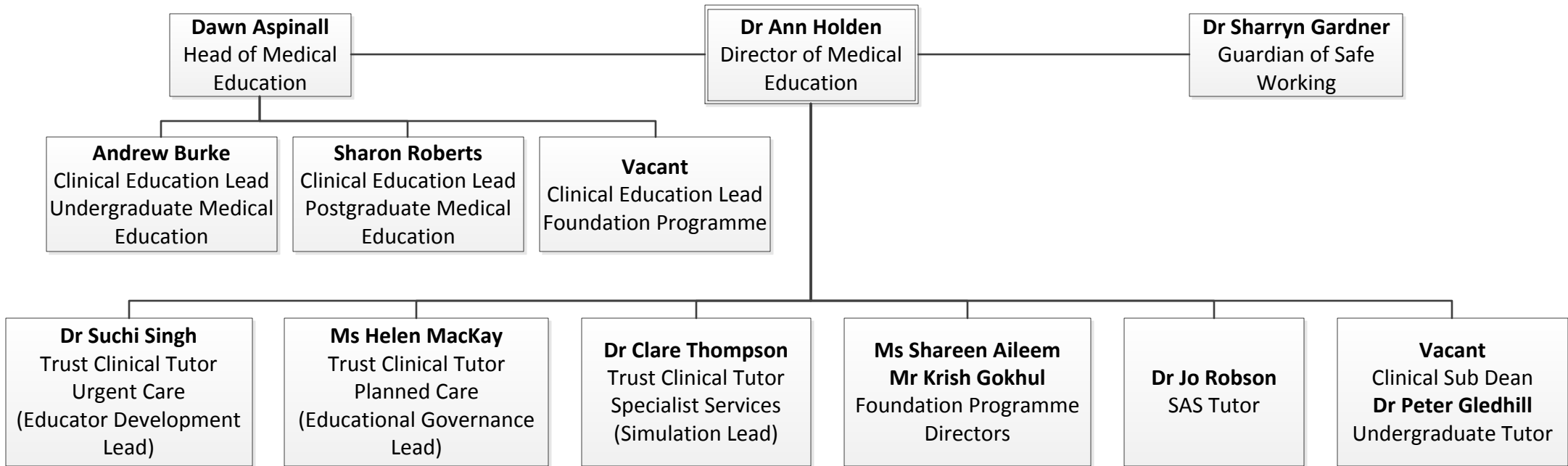
# HR, Health & Wellbeing, Education & Training



# Medical Director/Responsible Officer/ Caldicott Guardian



# Department of Medical Education



# Department of Nurse Education

